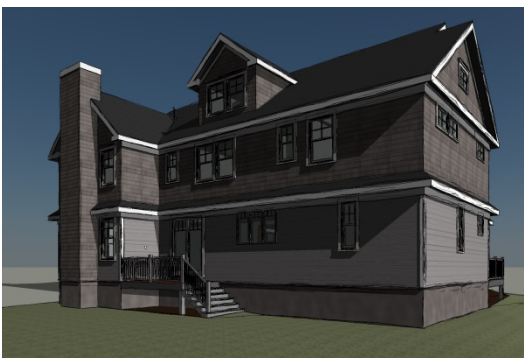
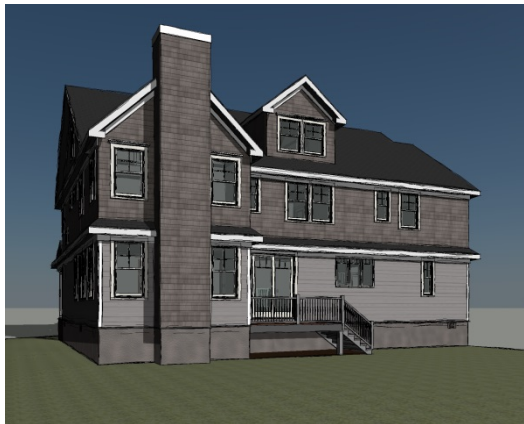
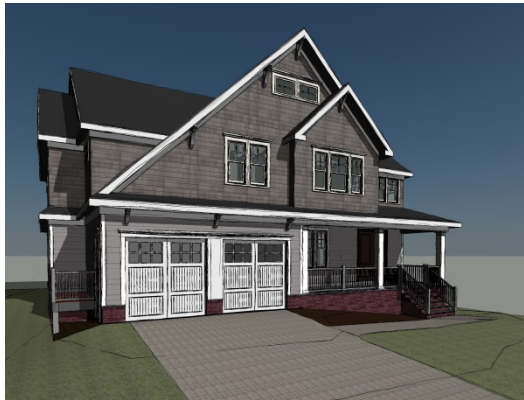
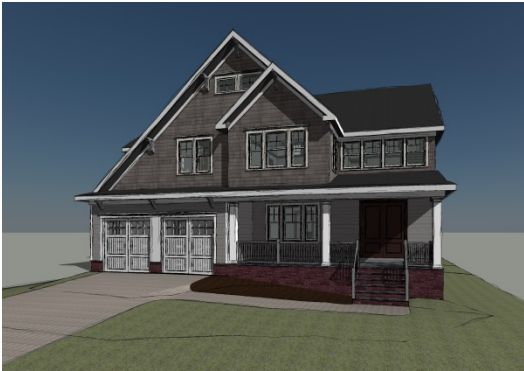


BLOCK 30 LOT 13.02

53 Navesink Drive

Monmouth Beach, New Jersey



EXTERIOR FEATURES:

- Andersen 200 series tilt-wash windows with insulated glass and fine light grills on upper sash
- (1) 16' X 8' Clopay "Gallery" insulated garage doors
- (1) Electric garage door openers- Chain Driven
- CertainTeed Cedar Impressions on all elevations
- 3 1/2" Wide J-channel around all windows and doors
- Azek decking front porch
- Timberline dimensional roof shingles - 30 year
- Bluestone walkway from house to driveway
- Stone or brick applied to the foundation on the front elevation
- Irrigation System for front, side and rear yard.
- Full sod lawn
- Front beds will be landscaped

FIRST FLOOR

Entry Foyer

- Hardwood Floors - 3 1/4" Red Oak
- Crown Molding – 4 5/8" Regal crown Molding
- Casing- 3 1/2" Windsor
- Base Molding - 5 1/2" Colonial neck base molding
- One Coat Closet with crawl space access panel

Dining Room

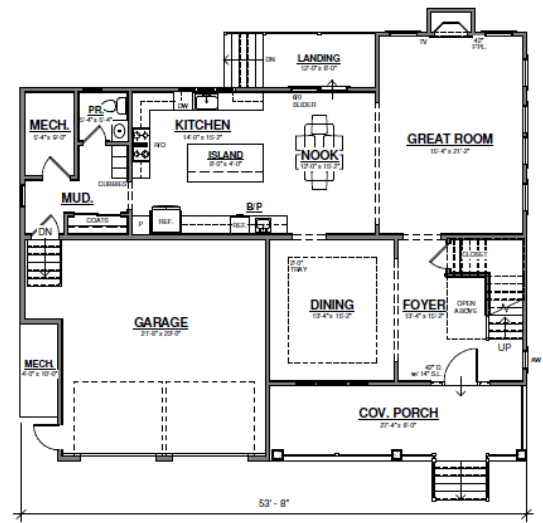
- Hardwood Floors - 3 1/4" Red Oak
- Crown Molding- 4 5/8" Regal Crown Molding
- Casing- 3 1/2" Windsor
- Base Molding- 5 1/2" Colonial neck base molding
- Box Molding applied to walls at 40" height

Great Room

- Hardwood Floors- 3 1/4" Red Oak
- Crown Molding- 4 5/8" Regal Crown Molding
- Casing- 3 1/2" Windsor
- Base Molding- 5 1/2" Colonial neck base molding
- Wood burning Fireplace with granite/marble surround
- Custom Wood Mantel
- Custom Coffered Ceiling

Kitchen

- Hardwood Floors- 3 1/4" Red Oak
- Crown Molding- 4 5/8" Regal Crown Molding
- Base Molding- 3 1/2" Windsor
- Semi- Custom cabinetry w/ granite countertops
- Large Center Island with granite top and 2 pendant lights above
- Granite Countertops
- Tile backsplash
- Under cabinet lighting above work surfaces
- Stainless steel sink w/ garbage disposal



① 1st Floor
1/8" = 1'-0"

Mudroom

- Hardwood Floors- 3 1/4" Red Oak
- Crown Molding- 4 5/8" Regal Crown Molding
- Base Molding- 5 1/2" colonial neck base
- Casing- 3 1/2" Windsor
- Built in cubby system for 3
- Beadboard applied to walls up to 40" height

First Floor Bath

- Hardwood Floors- 3 1/4" Red Oak
- Kohler and Moen Fixtures
- vanity w/ granite countertop
- Beadboard applied to walls up to 40" height
- Crown Molding- 4 5/8" Regal Crown Molding
- Base Molding- 5 1/2" colonial neck base
- Casing- 3 1/2" Windsor

SECOND FLOOR

Upstairs Stair Hall

- Hardwood Floors- 3 1/4" Red Oak
- Crown Molding- 4 5/8" Regal Crown Molding
- Base Molding- 5 1/2" colonial neck base
- Casing- 3 1/2" Windsor

Master Suite

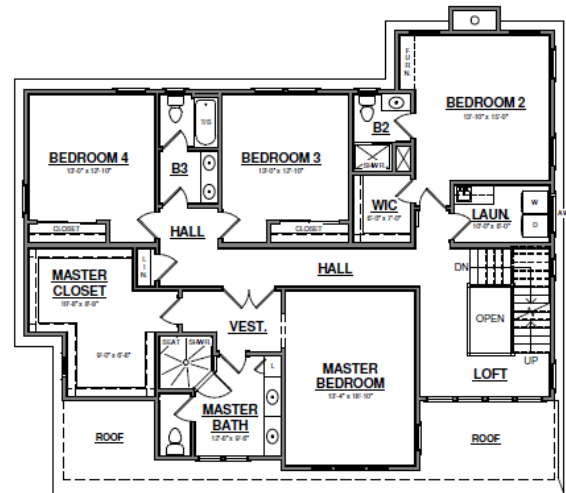
- Crown Molding- 4 5/8" Regal Crown Molding
- Base Molding- 5 1/2" colonial neck base
- Casing- 3 1/2" Windsor
- Carpet

Master Closet

- Custom closet design
- Carpet
- Base Molding- 5 1/2" colonial neck base
- Casing- 3 1/2" Windsor

Master Bath

- Tiled shower w/ corner seat
- Tile floor
- Moen & Kohler fixtures
- Linen closet with shelving
- Base Molding- 5 1/2" colonial neck base
- Casing- 3 1/2" Windsor



① 2nd Floor
1/8" = 1'-0"

Bedrooms 2, 3 and 4

- Base Molding- 5 1/2" colonial neck base
- Casing- 3 1/2" Windsor
- Bar & shelves in all walk in closets
- Carpet

Second Floor Baths

- Base Molding- 5 1/2" colonial neck base
- Casing- 3 1/2" Windsor
- Tile floors
- Vanities w/ cultured marble countertops
- Tile Tub/ Shower surrounds
- Kohler and Moen fixtures

Laundry Room

- Base Molding- 5 1/2" colonial neck base
- Casing- 3 1/2" Windsor
- Tile floor

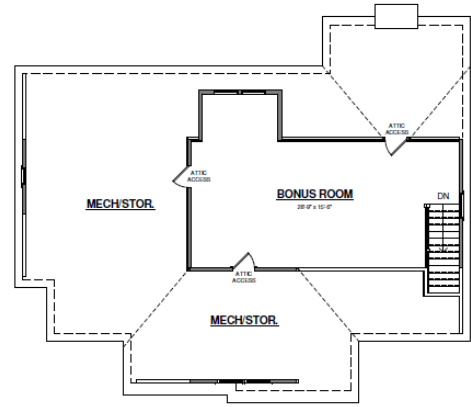
HALF STORY

Bonus Room (FROG)

- Base Molding- 5 ½ “colonial neck base
- Casing- 3 ½” Windsor
- carpet

Miscellaneous Features

- Schlage interior door knobs in your choice of finish
- Masonite solid core doors for bedrooms and baths and hollow core for closets
- Schlage exterior door hardware for front door in your choice of finish



① Half-Story
1/8" = 1'-0"